

KNOXVILLE
MUSEUM OF ART



Annual Report

July 1, 2018 – June 30, 2019



Knoxville Museum of Art Annual Report 2018-2019

Table of Contents

Mission/History.....	3
Executive Director’s Report	5
By the Numbers.....	9
Programs.....	10
Exhibitions.....	12
Acquisitions.....	15
Financials.....	17
Board of Trustees.....	18
Guild of the KMA.....	19
KMA Fundraising Events.....	20
Art House/Collectors Circle.....	21
Annual Donors.....	22
Staff.....	28

Mission/History

The Knoxville Museum of Art celebrates the art and artists of East Tennessee, presents new art and new ideas, educates and serves a diverse community, enhances Knoxville's quality of life, and operates ethically, responsibly, and transparently as a public trust.

The KMA's predecessor, the Dulin Gallery of Art, opened in 1961. By the middle 1980s the gallery had outgrown its quarters in the 1915 Dulin House, a landmark design of John Russell Pope. An ambitious community effort raised \$11 million for a state-of-the-art facility overlooking the site of the 1982 World's Fair in downtown Knoxville. In March 1990, the Knoxville Museum of Art opened in its current 53,200 square-foot facility designed by renowned American architect Edward Larrabee Barnes. The exterior of the four-story steel and concrete building, named in honor of Jim Clayton, the largest single contributor to its construction, is sheathed in locally quarried pink Tennessee marble.

In the decades since the museum opened, its collection and programming have evolved to become increasingly focused on the rich culture, old and new, of the Southern Appalachians: to "celebrate the art and artists of East Tennessee." *Higher Ground: A Century of the Visual Arts in East Tennessee*, a permanent exhibition of works from the mid-nineteenth to the late-twentieth century, spotlights the compelling and heretofore largely unknown visual arts legacy of Knoxville and the region. To this has recently been added a permanent exhibition of modern and contemporary art: *Currents: Recent Art from East Tennessee and Beyond* supports the museum's parallel aim to "introduce new art and new ideas." It features a selection of objects from the KMA's growing collection by emerging and established artists and represents a chronological and geographic expansion of *Higher Ground* that allows viewers to consider the achievements of area artists within a global context. *Facets of Modern and Contemporary Glass* showcase the KMA's growing holdings of 20th- and 21st-century glass. The museum supplements and complements its core permanent installations with a lively schedule of temporary exhibitions that explore aspects of regional culture and its relation to national and international artistic developments.

Museum tours, workshops, artist residencies, outreach programs, lectures, concerts, classroom programs, and family activities form the core of the museum's educational programming. The KMA reaches over 60,000 annually through museum visits, special events, concerts and other programs. In addition, thousands attend special events and community celebrations held in the museum's beautiful public spaces.

Mission/History (Cont.)

In spring 2014 the museum unveiled a permanent, monumental glass installation by acclaimed Knoxville artist Richard Jolley, a powerful affirmation of the KMA's commitment to the art and artists of our region. *Cycle of Life: Within the Power of Dreams and the Wonder of Infinity*, the generous gift of Ann and Steve Bailey, is the largest figural glass installation in the world. In preparation for the epochal milestone in the KMA's history, the museum underwent a comprehensive, top-to-bottom restoration and renovation at a cost of nearly \$6 million. The museum's beautiful pink Tennessee marble cladding has been cleaned and restored. The entry plaza and third floor terrace were demolished, waterproofed, rebuilt, and elegantly repaved with pink and gray Vermont granite. Visitors can now enjoy beautiful new restrooms and pristine new terrazzo floors on the second and third levels; a renovated and functional catering kitchen can better support museum events and outside rentals. The new North Garden has been handsomely articulated with new retaining walls, terraces, and ramps, and planted with native trees, shrubs, and ground cover. These vital repairs and upgrades, made possible by success of the 25th Anniversary Campaign, will ensure the preservation and enjoyment of Edward Larrabee Barnes' modernist masterpiece as it moves into its second quarter-century. The campaign also supported endowment enhancement and the establishment of a dedicated art acquisition fund.

The museum's approximately \$1.8 million annual operating budget comes from individual and corporate donors, museum memberships, rental income, local, state, and federal government grants, endowments, and annual fundraising events organized by the KMA Guild. More than 200 volunteers donate in excess of 7,000 volunteer hours each year. The KMA has operated solidly in the black for more than a decade, and is committed to the highest ethical and professional standards. The KMA was accredited by the American Alliance of Museums in 1996 and reaccredited in 2005 and 2015, a distinction shared by fewer than 10% of American museums.

Executive Director's Report

July 1, 2018-June 30, 2019

From the Executive Director

The KMA continued during the 2019 fiscal year (July 1, 2018-June 30, 2019) to consolidate its position as the premiere showcase for the art and artists of East Tennessee. One of the most important developments of the year unfolded behind the scenes, in preparation for one of the museum's biggest and most ambitious projects in years. I reported last year on our success in acquiring a stellar group of major works by Knoxville native Beauford Delaney, one of the most significant art purchases in the museum's history. This coup conferred on the KMA the status of the world's largest (!) public collection of art by Beauford Delaney, a distinction that has given us the credibility and clout to organize a landmark exhibition exploring Beauford's rich and complex relationship with iconic writer and civil rights activist James Baldwin. *Beauford Delaney and James Baldwin: Through the Unusual Door* opens at the KMA in February 2020. This ambitious project, which includes a full-color catalogue being published by the University of Tennessee Press, has consumed Bernard E. and Barbara W. Bernstein Curator Stephen Wicks for years, and has already attracted significant support from the Henry Luce Foundation, the National Endowment for the Arts, and the Art Dealers Association of America Foundation, as well as a host of local sponsors. It draws from the KMA's extensive Delaney holdings, public and private collections around the country, and unpublished archival material. This is the biggest, most ambitious project we've undertaken since the installation of Richard Jolley's *Cycle of Life*. *Through the Unusual Door* represents the highest and best expression of the KMA's mission as an institution dedicated to the visual culture of East Tennessee and its connections to the wider world, and sets a standard for the scale and ambition of how we want to operate in the future.

Even though the KMA has been very focused on Beauford for the past few years, we haven't neglected his brother Joseph. We were proud to organize a retrospective exhibition of Joseph's work in the fall of 2018, the first anywhere in many years. In the course of putting that exhibition together, Stephen Wicks located in a New York private collection a key work of Joseph's, a scene drawn from the artist's memories of the lively and diverse neighborhood in the area now known as the Old City where he and Beauford grew up. We were thrilled to acquire Joseph's 1940 *Vine and Central, Knoxville, Tennessee* with funds provided by the KMA Collectors Circle, the Rachael Patterson Young Art Acquisition Reserve (an acquisition fund established by the Aslan Foundation), Nancy and Charlie Wagner, and Richard Jansen. There's a satisfying historical symmetry in the fact that this celebration of Knoxville's bustling African American entertainment and business district came to the KMA in 2019, exactly 100 years after the racial violence of 1919 started the cycle of decline and erasure that nearly obliterated the physical traces of Knoxville's once-flourishing African American community.

Executive Director's Report (cont.)

What the KMA is doing to honor and celebrate the Delaney brothers is part of a larger community-wide effort to reclaim all of Knoxville's creative history, operating under the umbrella of what we're calling "Gathering Light: The Delaney Project" and the leadership of KMA trustee honoree Sylvia Peters. Soon after the opening of *Through the Unusual Door*, Marble City Opera will premiere a new chamber opera based on Beauford Delaney's life and art, and the University of Tennessee Humanities Center will present an international symposium on Beauford Delaney and James Baldwin. The Beck Cultural Exchange Center, Knoxville's African American museum, is raising funds to restore and repurpose the Delaney family home on Dandridge Avenue, and many more projects are in the works. The KMA is proud to take on a leadership role in this broadly-based initiative. A key partner in this endeavor has been the Knoxville chapter of the Links, Incorporated, an organization of women of African heritage who are committed to enriching, sustaining and ensuring the identities, culture, and economic survival of all people of African origin through cultural, educational and civic programs. The Delaney Project has the potential to open doors and chip away at some of the social, cultural, and racial barriers that separate segments of our community, and we think it will have widespread and long-lasting positive impact.

Another highlight of the 2019 fiscal year was the KMA's first-ever art exhibition drawn exclusively from a Knoxville private collection: *Lure of the Object: Art from the June and Rob Heller Collection* February 8-April 21, 2019. The Hellers have greatly enriched the KMA's holdings with the donation of numerous and important works of art, as well as sizable capital and operating gifts. Their extraordinary support for the KMA was recognized several years ago with the naming of the June & Rob Heller Garden on the north side of the building. As if all they have done wasn't enough, they emptied their walls of most of their art to share their collection with us, and we are very grateful. Thank you, June and Rob!

Another important development this year took place in the background: after years of study and deliberation, the KMA launched an entirely new web site. The former site was nearly as old as the internet itself and had grown increasingly creaky over the years as new technology was patched on to it, Rube Goldberg style. The new site (still www.knoxart.org) was purpose-built from the ground up and is infinitely more adaptable and easier to navigate than the old. The new platform makes it possible to present more content on cell phones and tablets for gallery interpretation and education programs. It took a while, but the wait was worth it.

In September the spectacular glass house left to the museum by the late William Shell, a longtime professor in the UT School of Architecture, was sold with protective covenants overseen by Knox Heritage to ensure its ongoing preservation. A task force chaired by former board chair Richard Jansen is developing recommendations for the use the proceeds that honor the donor's legacy and furthers the KMA's core mission.

Executive Director's Report (cont.)

Of course, the museum continued to do in the 2019 fiscal year the same great things day in and day out that have impact throughout our community. In December we welcomed hundreds of student-artists and their parents and families, from Chattanooga to Kingsport, for the opening of the annual East Tennessee Regional Student Art Exhibition. We are grateful to our downtown neighbor Regal Entertainment for its generous presenting sponsorship of this important exhibition, for more than ten years now. Thousands of young people participated in school tours, biennial Family Fun Days, Summer Art Academy, and Second Sunday art activities on site. The museum also offered engaging programming for adult audiences, including the annual Sarah Jane Hardrath Kramer Lecture, now in its tenth year, and "Alive After Five," the KMA's popular series of Friday-evening live music, which celebrated its twenty-sixth birthday in 2018. Much of the museum's important work happens out in the community, and we're proud of the KMA's extensive outreach in the region, which connected with 6,500 young people last year. We're especially proud that we can offer high-quality, after-school art instruction by certified art teachers in eleven Knoxville schools as part of the Great Schools Partnership/Community Schools Program, which brings enrichment and learning opportunities to students and their families in economically disadvantaged neighborhoods.

As always, hundreds of KMA volunteers support the museum's work by serving in a variety of capacities, greeting visitors (just under 70,000 in the 2019 fiscal year), helping with Alive After Five, working in the office, staffing events, conducting tours, and much, much more. We're able to learn more about our visitors through a new online survey tool donated by KMA trustee Courtney Jernigan of Knoxville Graphic House. The KMA Guild continues to marshal the skill and energy of scores of volunteers to raise vital operating funds. The Guild's 2018 Holiday Homes Tour, which has grown into a beloved seasonal activity, brought in more than ever before to support museum operations (I report this every year, and it continues to be true!). In April the popular Artists on Location plein air painting event and art sale once again brought together hundreds of artists and buyers to benefit the KMA. A new museum auxiliary group, Art House, is enjoying great success in engaging younger stakeholders. The annual food and wine event L'Amour du Vin has grown into the largest single source of operating revenue for the KMA. We are the event committee and the volunteers, event sponsors (starting with presenting sponsor Lexus of Knoxville and indispensable partner Blackberry Farm), and auction lot donors for making net proceeds of the 2018 event the highest ever (this is the exact sentence I used last year, and I'm happy to report that it's true this year). We've been fortunate over the past sixteen years of L'Amour du Vin to cultivate productive relationships with an increasing number of California vintners. In 2019 we were the recipient of the extraordinary generosity of Ridge Vineyards. Each year the featured vintner donates dozens of cases of exquisite wine, often ones that are not available for general sale. It is gratifying and humbling that so many people give so much and work so hard to benefit the museum.

Executive Director's Report (cont.)

We'll be able to offer even more classes and education programs by next year, when the repurposing of the Regal Auditorium into a multipurpose room and two art studios is complete. We had almost enough money set aside to carry out this project, but not quite enough. Two major gift commitments, from Ann and Steve Bailey and June and Rob Heller, will get us nearly all the way to the top. The new spaces should be read to go by summer or fall of 2020, and it's exciting to consider the prospect of a greatly expanded roster of programming.

It is an honor and pleasure to serve as the executive director of the KMA.

David Butler

BY THE NUMBERS

July 1, 2018-June 30, 2019

	FY 2011	FY 2012	FY 2013	FY 2014***	FY 2015	FY 2016	FY 2017	FY 2018	FY 2019
# of visitors*	49,352	55,114	42,382	36,527	56,161	55,121	69,072	73,683	69,896
membership retention	71%	79%	73%	75%	78%	72%	77%	74%	76%
# of memberships	1,650	1,534	1,544	1,441	1,579	1,534	1,604	1,620	1,546
private gifts & grants	\$748,271	\$814,982	\$796,170	\$1,068,519	\$930,706	\$741,411	\$743,176	\$752,652	\$745,474
earned income**	\$219,966	\$264,949	\$238,069	\$126,788	\$286,742	\$277,578	\$342,452	\$344,739	\$319,600
endowment corpus	\$2,578,962	\$2,907,337	\$3,299,257	\$3,957,373	\$4,044,006	\$4,119,185	\$4,699,286	\$5,186,037	\$5,476,145
total revenue	\$1,677,595	\$1,858,939	\$1,772,219	\$1,932,650	\$2,032,005	\$1,887,882	\$2,065,826	\$2,158,518	\$2,177,730
total expenses	\$1,549,890	\$1,586,532	\$1,619,011	\$1,784,500	\$1,862,337	\$1,805,394	\$1,830,498	\$1,899,721	\$1,967,633

***individual visitors (adults & children), group tours, education programs, concerts, openings, and rentals**

****shop, facility rentals, donation box, interest, AA5, tuition, misc. income**

*****facility wholly or partially closed September 2013-March 2014**

PROGRAMS

July 1, 2018-June 30, 2019

KMA's Education programs are free and open to the public, unless otherwise noted.

The KMA's education programs are generated by and support the museum's exhibitions, both permanent and temporary, helping to fulfill the KMA's mission to "educate and serve diverse audiences." A range of educational programs that can include brief artists' residencies, gallery talks, and volunteer docent training by exhibiting artists, museum staff, or guest lecturers accompanies exhibitions. Docent-led school tours; Family Fun Day activities; video content available on YouTube; guided and unguided museum visits, and outreach programs to schools.

K-12 Programs

In FY2019 thousands of students from several counties participated in on- and off-site museum programs, including 401 children who participated in the KMA Summer Art Academy, 100 of whom paid no tuition thanks to scholarships provided by museum donors. The Education Gallery showcased student work from 7 schools from 4 counties in Tennessee and one school from Paris, France. ART2GO Travel Cases were checked out by 32 teachers and used with 1,460 students in classrooms and homes. On-site art experiences led by trained volunteer docents reached 2,464 children and 1,313 adults. The Rogers Transportation Fund provided buses for 559 children for classroom trips to the KMA. Family Fun Day on August 25, 2018 attracted a total of 622 children and parents with art activities, music, gallery tours, food, and fun. The Creative Corner is a colorful space off the main entrance lobby for children and adults, that enhances hands-on learning and creativity. The Community Schools Program, an innovative public partnership, makes use of school buildings after hours to provide services, training, and resources to families in economically disadvantaged neighborhoods, and reached 3,814 students throughout all of Knox County. The KMA hosted the East Tennessee Regional Student Art Exhibition which received 950 student entries. The final exhibition featured 324 student artworks and had 112 participating teachers. The outreach program Meet the Master held off-site events for 362 students in Knox, Jefferson, Sevier, and Blount Counties, and an on-site event for all of Knox County in which 254 students attended.



Public Programs

The KMA continues its popular series of Friday-evening live music, Alive After Five, presented in four seasonal series, featuring quality local and regional R&B, jazz, blues, and swing bands. In fiscal 2019, Alive After Five was presented 26 times with a total attendance of 5,794. Dine & Discover offers insight into current KMA exhibitions, the museum's collection, and the art world in general by visiting curators, artists, historians, and KMA staff. In fiscal 2019, there were three Dine & Discover events with a total attendance of 186. Cocktails & Conversation combines socializing and learning, with lectures and gallery talks in a casual setting. In fiscal 2019, there were three Cocktails & Conversation events with a total attendance of 147. The KMA presented its annual Sarah Jane Hardrath Kramer Lecture on April 16, 2019 featuring Shawnya L. Harris, Ph.D. from the Georgia Museum of Art at the University of Georgia. The event had total attendance of 97. Docents at the KMA are unpaid professional members of the museum staff who are interested in the visual arts and enjoy sharing that knowledge with others. They act as interpreters who facilitate interaction with original works of art for K-12 grade students, family groups, adults, and special-needs audiences, including special tours for early-stage dementia patients. On the second Sunday of the month, KMA offers gallery drop-in tours, where docents give free guided tours of Higher Ground, Currents, and temporary exhibitions in English and Spanish. Docents and KMA staff offer off-site PowerPoint presentations about the KMA in English, Spanish, and French. This year the corps of active docents is 13. Every second Sunday of each month, the KMA hosts free Second Sunday drop-in art activities for families. A local artist is on-site to lead hands-on art activities between 1 and 4pm. In fiscal 2019 there were 11 Second Sunday Activity Days with a total attendance of 914.

The KMA Volunteer Program engages nearly 200 volunteers throughout the year serving in every department of the museum. Volunteers donated 16,903 hours of their time in the fiscal year 2019 by assisting in various programs and operations of the museum such as Alive After Five, Docents, Family Fun Days, front desk, Summer Art Academy, administration, development, education, and marketing. These volunteers help the KMA to operate efficiently and on budget. The Volunteer Advisory Council is made up of 8 long-term volunteers representing each area of volunteer service.

Exhibitions

July 1, 2018-June 30, 2019



Higher Ground: A Century of the Visual Arts in East Tennessee Ongoing

This permanent installation, housed in one of the two large top-floor galleries, traces the development of fine art and craft in the region and the surrounding area over the past century. It tells the largely unknown story of the area's rich artistic history and its connections to the larger currents of American art. Featured works are drawn from the KMA collection along with selected works on loan from several regional museums and private collections.

Currents: Recent Art from East Tennessee and Beyond Ongoing

This exhibition showcases the exciting range of contemporary works by a stellar slate of international artists and East Tennessee luminaries. The selection is grouped in thought-provoking juxtapositions that call attention to new directions in art and new approaches to the artistic process, and help viewers discover meaningful connections between featured works.

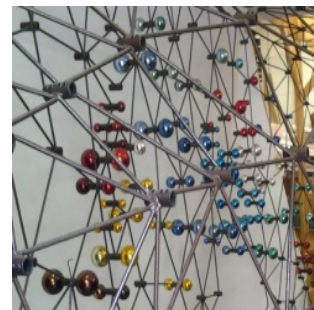


Thorne Miniature Rooms Ongoing

Thorne Rooms are among America's most well-known miniature diorama groups. The Thorne Rooms were developed in the 1930s and 40s by Mrs. James Ward Thorne of Chicago, who collected miniature furniture and accessories and used them to create dioramas built to a scale of one inch to one foot.

Cycle of Life: Within the Power of Dreams and the Wonder of Infinity Ongoing

Approximately 105 feet in length, 12 feet in height, and 30 feet in depth, *Cycle of Life* is one of the largest figurative glass-and-steel assemblages in the world. Created by internationally renowned Knoxville artist Richard Jolley, it comprises thousands of cast and blown glass elements and tons of patinated metal, and depicts a narrative interpretation of the life cycle through symbolic forms including human figures, a tree of life, birds, blooms and leaves, and celestial bodies.



Facets of Modern and Contemporary Glass Ongoing

Facets is a new ongoing installation featuring the KMA's growing collection of modern and contemporary glass as well as works on loan. This rotating display represents a broad spectrum of recent experimentation in the medium of glass by artists from around the world such as Harvey Littleton, Dominick Labino, Vaclav Cigler, Luke Jerram, and Frantisek Vizner. *Facets* is intended to encourage museum visitors to consider Richard Jolley's *Cycle of Life* within a larger context, and reflect the KMA's progress in establishing a tightly-focused collection of sculptures in glass by internationally-recognized contemporary artists who are introducing new technical and conceptual approaches to the medium.



Scenic Impressions: Southern Interpretations from the Johnson Collection

May 4, 2018-July 29, 2018

Featuring more than 40 paintings from the extensive holdings of the Johnson Collection, Spartanburg, South Carolina, this exhibition examines the history of the Impressionist movement and its influence on art created in and about the American South. Artists represented in the exhibition include Kate Freeman Clark, Elliot Daingerfield, Gilbert Gaul, Alfred Hutter, Rudolph Ingerle, Willie Betty Newman, Alice Huger Smith, William Posey Silva, and Catherine Wiley – several of whom were active in East Tennessee. Organized by the Johnson Collection.

Joseph Delaney: On the Move

August 17, 2018-November 4, 2018

Born in Knoxville to a minister-father, Joseph Delaney (1904-1991) and his brother Beauford (1901-1979) learned to draw on Sunday school cards at church and took art lessons with distinguished local artist, Lloyd Branson. He studied with regionalist painter Thomas Hart Benton at New York's Art Students League with a group of classmates that included Jackson Pollock. Delaney spent the next 56 years painting portraits, figure studies, and lively scenes of urban life in lower Manhattan. *On the Move* will include key works from major segments of Delaney's career designed to represent the winding path of his artistic journey. Organized by the KMA.





East Tennessee Regional Student Art Exhibition

November 23, 2018-January 13, 2019

This collaborative project with the East Tennessee Art Education Association is designed to gather the best student work grades 6-12 from a 32-county region; award winners are eligible for \$1,000,000 in scholarships to national art schools. Organized by the KMA.

Lure of the Object: Art from the June and Robert Heller Collection

February 8, 2019-April 21, 2019

This exhibition includes a diverse selection of sculpture and paintings from a couple who are among Knoxville's most active, adventurous, and philanthropic art collectors. Contemporary glass is a particular area of focus, and the exhibition includes works by William Morris, Bertil Vallien, Oben Abright, Dante Marioni, Richard Jolley, and Therman Statom. Complementing sculptural works are paintings by Jim Dine, Frank Stella, Christo, and Paul Jenkins.



Design by Time

May 10-August 4, 2019

Design by Time is the first exhibition to identify and bring together works from known and emerging designers, in the US and abroad, whose interest is in expressing the passage of time, a visual expression of life, through the design of objects. It represents the notion of the dynamic passage of time and how it can be expressed by a variety of design objects including textiles, carpets, ceramics, lighting fixtures, vessels, clocks, and furniture.



Acquisitions

July 1, 2018-June 30, 2019

Henri Cartier-Bresson (Chanteloup-en-Brie, France 1908-2004 Céreste, France), *Knoxville, Tennessee, 1947*. Gelatin silver print, 12 x 16 inches, 2019 purchase with funds provided by June and Rob Heller, Jim Martin, James L. Clayton, Hei Park, John Cotham, Jayne and Myron Ely, Dorothy and Caesar Stair, Ebbie Sandberg, John Trotter, KMA Guild, Mardel Fehrenbach, Kitsy and Louis Hartley, Sylvia and Jan Peters, Mary Rayson, Alexandra Rosen, John Z.C. Thomas, and Lisa Carroll.



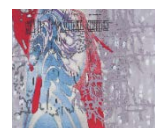
Joseph Delaney (Knoxville 1901-1991 Knoxville), *Sketchbooks and drawings, 1940s-1960s*. Various media on paper, dimensions variable, 2019 gift of Patrick Albano.



Joseph Delaney (Knoxville 1904-1991 Knoxville), *Vine and Central, Knoxville, Tennessee, 1940*. Oil, pastel, and charcoal on canvas, 30 x 24 inches, 2018 purchase with funds provided by KMA Collectors Circle, Rachael Patterson Young Art Acquisition Reserve, Nancy and Charlie Wagner, and Richard Jansen.



Hamlett Dobbins (Knoxville 1970; lives and works in Memphis), *Untitled (for I.V./C.B.)*, 2016. Acrylic on canvas, 40 x 48 inches, 2018 gift of the artist and David Lusk Gallery, Memphis.



Rudolph Ingerle (Vienna, Austria 1879-1950 Highland Park, Illinois), *Along the Pigeon River Near Gatlinburg, Tennessee, circa 1929*. Oil on canvas, 28 x 34 inches, 2018 gift of Barry and Allen Huffman



Richard Jolley (Wichita, Kansas 1952; lives and works in Knoxville), *Woman with Garland*, 1993. Monoprint on Rives BFK paper, 30 x 22 inches, 2019 gift of Ellen and John Buchanan.



Tobi Kahn (New York 1952; lives and works in New York), *BA'AT*, 2001. Bronze, 102 x 42 x 31 inches, 2019 gift of Lynne and Charles Klatskin.



Karen LaMonte (New York 1967; lives and works in Prague, Czech Republic), *Nocturne 1*, 2019. Cast iron, 60 x 26 ½ x 19 inches, 2019 purchase with funds provided by Nancy and Stephen Land.



Marin Majic (Frankfurt am Main, Germany 1979; lives and works in Berlin), *Foyer*, 2010. Oil on canvas, 70 9/10 x 90 3/5 inches, 2018 gift of Stephen Hanson.



Creighton Michael (Knoxville 1949; lives and works in New York), *KOAN 288*, 1988. Plywood, tin, screen, and acrylic, 67 1/2 x 39 x 19 3/4 inches, 2018 gift of Jerry H. Labowitz.



Joe Parrott (Knoxville 1944; lives and works in Knoxville), *Parkridge House*, 2019. Oil on plywood, 24 x 24 inches, 2019 gift of the artist.



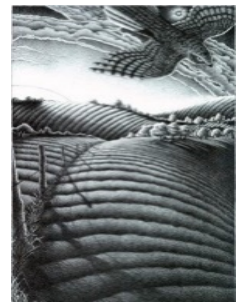
Daniel Pitin (Prague, Czech Republic 1977; lives and works in Prague), *Waiting*, 2010. Oil and acrylic on canvas, 15 7/10 x 23 3/5 inches, 2018 gift of Stephen Hanson.



Barry Spann (Dickson, Tennessee 1948; lives and works in Knoxville), *River Trees*, 1979. Graphite on paper, 4 1/2 x 5 inches, 2018 gift of Dr. Gene Aaby.



Barry Spann (Dickson, Tennessee 1948; lives and works in Knoxville), *Twenty-Seven Landscapes (portfolio)*, 1984. Collotype on paper, dimensions variable, 2018 gift of Dr. Gene Aaby.

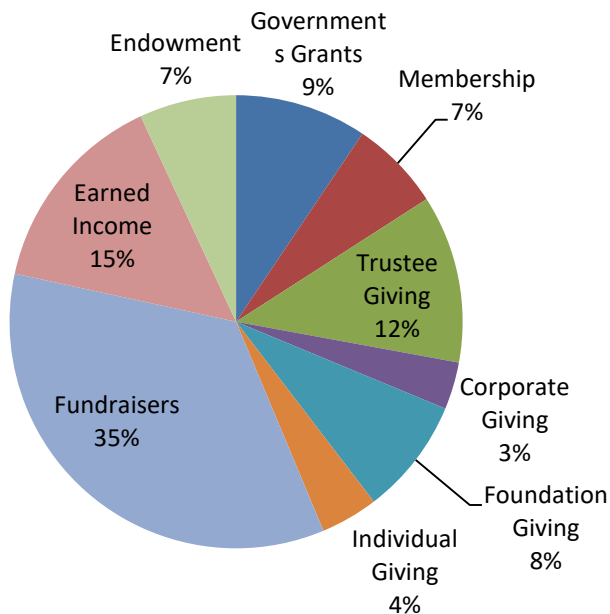
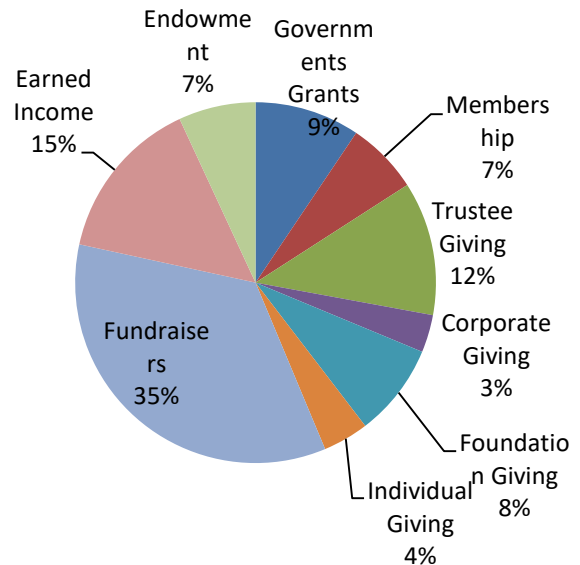


Financials

July 1, 2018-June 30, 2019

Income

Total Income: \$ 2,177,731



Expenses

Total Expenses: \$ 1,967,632

Board of Trustees

July 1, 2018-June 30, 2019

Board of Trustees

Voting Trustees

Joan Ashe
Steve Bailey
Julia Bentley
Melissa Burleson
Chris Cannon
Pamela Chips
Connor Coffey
Annie Colquitt
Monica Crane
Jennifer Dunn
Rosemary Gilliam
Madeline Griffey
Frances Hall
Rusty Harmon
Hunter Harrison
Kitsy Hartley (VAC)
Nazzy Hashemian
June Heller
Susan Hyde
Richard Jansen
Courtney Jernigan
Debbie Jones
Allison Lederer
Courtney Lee
Beauvais Lyons
Karen Mann
Jay McBride
Sylvia Peters
Patricia Brake Rutenberg
Fred Smith, IV
Caesar Stair, IV
Rosalyn Tillman
John Trotter
Mollie Turner
Loida Velazquez
Charlie Wagner
Twuanna Munroe Ward
Terry Wertz
Taylor Wortham

EX OFFICIO TRUSTEES

David Butler (Executive Director)
Barbara W. Bernstein (Honorary
Trustee)
James L. Clayton (Honorary Trustee)
Daniel F. McGehee (Legal Counsel)
Jeff Peters (Collectors Circle Co-Chair)
Pam Peters (Collectors Circle Co-
Chair)

EXECUTIVE COMMITTEE

Officers

Chair: Allison Lederer
Chair-Elect: Caesar Stair, IV
Secretary: June Heller
Treasurer: Rusty Harmon
Immediate Past Chair: Richard
Jansen

Legal Counsel: Daniel F. McGehee

Standing Committee and Auxiliary Chairs

Building & Grounds: Jay McBride
Archives: Terry Wertz
Collections & Exhibitions: Susan
Hyde
Development: Taylor Wortham
Education: Patricia Brake Rutenberg
Finance: Rusty Harmon
Guild: Karen Mann
Human Resources: Debbie Jones
Marketing: Courtney Jernigan
Trustees: Caesar Stair, IV
Volunteer Advisory Council: Kitsy
Hartley

Members at Large (1-year appt.)

Steve Bailey
Rosemary Gilliam
June Heller

The Guild of the Knoxville Museum of Art

July 1, 2018-June 30, 2019

The Guild of the Knoxville Museum of Art was created in 1996 to encourage participation and support for the KMA as a cultural center for our area. The hardworking members of the Guild provide much needed funds for the museum through their world-class fundraising events. In addition, the Guild organizes for its members a wide variety of monthly programs that are both entertaining and educational.

OFFICERS

President: Karen Mann

Past President: Sandy Blevins-Steer

Recording Secretary: Susan Weber

Assistant Recording Secretary: Harriet Hodge

Corresponding Secretary: Lisa Carroll

Treasurer: Gail Vanhoozier

Assistant Treasurer: Donna Wertz

Parliamentarian: Jan Peter

Membership: Linda Haynes & Mary Morris

Programs: Marga McBride & Susan Watson Arbital

Hospitality: Wendy Ellis & Teressia Blair

Newsletter: Sandy Blevins-Steer & Emily Cox

Yearbook: Courtney Jernigan

Volunteer Placement: Maribeth Ergen & Carol Jacobs

Member at Larges: Sylvia Peters & Mimi Turner

Holiday Homes Chair: Mimi Turner

Holiday Homes Selection: Barbara Apking

Artists on Location Chair: Carol Coode

KMA Fundraising Events

July 1, 2018-June 30, 2019

Holiday Homes Tour December 13 & 14, 2018

For the 24th season, museum supporters opened their beautifully decorated homes for this wonderful holiday event organized by the Guild. A luncheon at Cherokee Country Club provided a relaxing and delicious break in the day. A special reception for a limited number of supporters took place the evening before the day tours.

Chair: Mimi Turner



L'Amour du Vin March 2, 2019

Now in its sixteenth year, L'Amour du Vin continues to be known as the finest food and wine event in the Southeast. The wines of 2019 featured winery Ridge Vineyards, represented by winemaker Eric Baugher, were paired with a menu prepared by featured chef Steven Satterfield of Miller Union in Atlanta, alongside the chefs of event partner Blackberry Farm. A live and silent auction offered collectable wines, special trips, exclusive experiences, and a sculpture by featured artist Andrew Erdos who lives and works in New York City. Events preceding the wine auction and gala included a Sponsors' Dinner and Artist's Luncheon held at Blackberry Farm, which also featured the wines of Ridge Vineyards; and a Vintners' Dinner held at JC Holdway featuring vintner Matt Hobbs of past featured winery Paul Hobbs.

Chairs: Melissa and Randy Burleson

Event Manager: Carla May Paré



Artists on Location, En Plein Air April 22-28, 2019

The Guild hosted this popular outdoor event featuring talented regional artists and the opportunity for both new and seasoned collectors to buy original paintings of some of Knoxville's best known and iconic sites. The annual exhibition, awards reception, and sale was held free and open to the public at the museum on April 28.

Chair: Carol Coode



Kick-Off to Summer May 10, 2019

At the fourth annual Kick-Off to Summer event, nearly 300 guests danced to the music of the Atlanta Showstoppers, and enjoyed a cocktail buffet prepared by Holly Hambright in the museum's Steve and Ann Bailey Hall.

Chairs: Ann Bailey and Annie Colquitt



Art House

July 1, 2018-June 30, 2019

Launched in 2016, this auxiliary membership group engages millennials and Gen X through exclusive events planned by a volunteer committee, including: a secret location holiday party, behind-the-scenes curatorial tour, private after-hours exhibition talks, tours of local art collectors' homes, a bi-annual summer event featuring artists with untraditional methods, and art classes for member's children.

This vibrant new group of supporters will help secure the long-term future and well-being of the KMA.

Art House Committee:

Courtney Lee, Chair

Melissa Burleson, Amelia Daniels, Amanda Hall, Courtney Jernigan, Allison Lederer, Mollie Turner, and Mandy Welch



Collectors Circle

Collectors Circle is a KMA membership group that provides opportunities for in-depth, close-up, and direct experiences with art through a unique “behind the scenes” approach and by becoming involved and invested in the museum’s collection.

Members explore the inner workings of the art world and learn directly from the actual works of art, the artists who create them, the art experts who interpret them, and the people who collect art. Collectors Circle visits important art destinations, private collections, and artists’ studios locally and nationally to gain a broad perspective on today’s art world.

Collectors Circle Chairs: Pam and Jeff Peters

Annual Donors

July 1, 2018-June 30, 2019

Knoxville Museum of Art Annual Giving

July 1, 2018—June 30, 2019

Clayton Society (\$100,000 and above)

AHB Foundation—Mr. and Mrs. Stephen W. Bailey
Clayton Family Foundation—Mr. and Mrs. James L. Clayton
The Guild of the Knoxville Museum of Art
Mr. and Mrs. Robert Heller
Mr. and Mrs. Stephen F. Land
The Estate of William Shell

Chairman's Club (\$50,000-\$99,999)

Bandit Lites—Mr. Michael Strickland
Bistro by the Tracks—Mr. and Mrs. Randy Burleson
Blackberry Farm—The Beall Family
City of Knoxville
Haslam Family Foundation—Pilot Flying J—Mr. and Mrs. James A. Haslam II
The Henry Luce Foundation
Knox County Government
Lexus of Knoxville—Mr. and Mrs. Doug White
Tennessee Arts Commission

Grandmasters (\$25,000-\$49,999)

The Aslan Foundation
Bennett—Ms. Jeannie Bennett
The Brewington Family
Mr. and Mrs. David Colquitt
East Tennessee Foundation
Frank and Virginia Rogers Foundation
Mr. Stephen Hanson
National Endowment for the Arts
Pharma Packaging Solutions—The Lederer Family
Regal Cinemas
The Trust Company of Tennessee—Mrs. Sharon Pryse

Masters (\$10,000-\$24,999)

All Occasions Party Rentals—Mr. and Mrs. Terry Turner
Art Dealers Association of America Foundation
Mr. and Mrs. Bernard Bernstein
Blackberry Mountain
Bob's Liquor & Wine—Mr. and Mrs. Robert Gilbertson
Dr. David Butler and Mr. R. Ted Smith
Campbell Station Wine and Spirits—Mr. and Mrs. David D. Stevens

Annual Donors (cont.)

July 1, 2018-June 30, 2019

Cherokee Distributing Company
Mary Hale Corkran
Mr. and Mrs. Christian Corts
Mr. and Mrs. Jared Dowling
Mr. Andrew Erdos
Mr. and Mrs. Ron Feinbaum
Mr. and Mrs. Joe Fielden
Mr. and Mrs. Frank Goswitz
Mr. and Mrs. Hunter Harrison
The Honorable and Mrs. William E. Haslam
Home Federal Bank
Ms. Vicki Kinser
Mr. and Mrs. Matthew R. Kaye
Knoxville Graphic House—Mr. and Mrs. Garrett Jernigan
Mr. Jerry Labowitz
Drs. Kimbro Maguire and Penny Lynch
Ms. Sheena M. McCall
Mr. and Mrs. James McDonough
Mendenhall Designs
Ms. Ellen R. Mitchell
Monaco—Mr. Richard Jansen
Publix Super Markets Charities
Dr. and Mrs. David B. Reath
ROQUE Events—Raquel Bickford Oranges
Schmid & Rhodes Construction—Mr. and Mrs. David Rhodes
Mr. and Mrs. Fred Smith IV
UBS Financial Services of Knoxville
US Foods
Mr. and Mrs. Charles A. Wagner III
Mr. and Mrs. Ronald A. Watkins
Mr. and Mrs. Eric Zeanah

Sustaining (\$5,000-\$9,999)

Arts and Heritage Fund
Mr. and Mrs. Joshua Bishop
Mr. and Mrs. Al Blakley
Ms. Sandi Burdick and Mr. Tom Boyd
Mr. Ashley Capps and Dr. Maria B. Clark
Clayton Homes, Inc.—Mr. and Mrs. Keith Holdbrooks
Dr. and Mrs. Jeffrey Crist
Denark Construction—Mr. and Mrs. Raja Jubran
Dr. and Mrs. Tracy Dobbs
Greg and Jennifer Dunn

Annual Donors (cont.)

July 1, 2018-June 30, 2019

Emerson Automation Solutions
Empire Distributing of Tennessee
Dr. and Mrs. R. Kent Farris
Mr. and Mrs. Stephen Harris
Mrs. G. Turner Howard, Jr.
Mr. Barry Huffman
KaTom Restaurant Supply, Inc.—Patricia Bible
Mr. and Mrs. Wayne R. Kramer
Knoxville Beverage Company
LAMP Foundation—Mrs. Townes Osborn and Mr. Robert Marquis
Dr. and Mrs. Reinhold Mann
Mr. and Mrs. Jay McBride
Merchant & Gould—Dr. John Winemiller and Dr. R.J. Hinde
Miller Union—Chef Steven Satterfield
Ms. Cynthia Moxley and Mr. Alan Carmichael
Old City Wine Bar—Mr. and Mrs. Thomas Boyd
Mr. and Mrs. Jan Peters
Mr. Bill Pittman and Ms. Tina Rolan
Regions Bank
Ridge Vineyards
Rotary Club of Knoxville
Mr. Richard K. Stair
Stokely Special Arts Endowment
Mr. Joseph W. Sullivan III
Texas Instruments Foundation
Mr. John Trotter
UT-Battelle
Mr. Charles Williams
Mr. and Mrs. Taylor Wortham

Benefactor (\$2,500-\$4,999)

All Occasion Catering—Mr. and Mrs. Neal Green
Ms. Pandy Anderson
Mr. and Mrs. Steve Apking
Atlantic Capital Bank
BB&T
Beverage Control, Inc.
Ms. Kay Clayton
Mr. and Mrs. Tyler Congleton
Mr. John Cotham
Mr. Joseph Creswell and Ms. Janet Testerman
D&V Distributing Company
Mr. and Mrs. Tom Dolinak

Annual Donors (cont.)

July 1, 2018-June 30, 2019

Mr. and Mrs. David Dugger
Ms. Charleene G. Edwards
Mr. and Mrs. Myron C. Ely
Mr. and Mrs. James A. Everett
Finch Photo
First Tennessee
Friedman's Appliances
G&G Interiors
The Gilliam, Montgomery Group of UBS—Ms. Rosemary Gilliam
Drs. Wahid and Samia Hanna
Mr. and Mrs. James H. Harrison
Mr. and Mrs. Louis A. Hartley
Mr. and Mrs. Cliff Hawks
Ms. Lane Hays
Mr. and Mrs. Andrew Hillmer
Mr. and Mrs. Glenn Irwin
Dr. and Mrs. Russ Johnston
Mr. and Mrs. Charles Klatskin
Dr. and Mrs. Stephen Krauss
Dr. and Mrs. Robert Madigan
Mr. James R. Martin
Dr. and Mrs. Robert O. Martin
Melrose Foundation
Mr. Lee Montgomery
O.P. Jenkins Furniture & Design
Dr. and Mrs. Stanley Park
Mr. and Mrs. Jeffrey D. Peters
Pinnacle Financial Partners
Mr. and Mrs. Taylor Preston
Ms. Alexandra Rosen and Mr. Donald Cooney
Mr. and Mrs. Edward B. Sims
Dr. and Mrs. Ronald K. Sandberg
Schaad Companies
Mr. and Mrs. Richard Smith
Mr. and Mrs. David Sprouse
Dr. and Mrs. Kevin Sprouse
Mr. and Mrs. L. Caesar Stair III
SunTrust Bank
Mr. John Z. C. Thomas
Mr. and Mrs. Camden Turner
Terry and Donna Wertz
Willis Towers Watson of Tennessee, Inc.
Dr. W. Bedford Waters*
Mr. and Mrs. William K. West

Annual Donors (cont.)

July 1, 2018-June 30, 2019

Mr. and Mrs. Geoffrey A. Wolpert
Mr. Kurt Zinser

Directors Circle (\$1,000-\$2,499)

@home audio-video

Mr. and Mrs. W. Robert Alcorn, Jr.

Amica Insurance

Ambassador and Mrs. Victor H. Ashe

Aside Project Studio

Dr. and Mrs. George R. Baddour, Jr.

Mr. and Mrs. Adrian Bailey

Dr. Jack Barlow and Ms. Diane Humphreys-Barlow

Mr. Greg Barnett

Mr. Samuel E. Beall, Jr.

Mr. and Mrs. Albert F. G. Bedinger, V

Mr. and Mrs. Gary Bentley

Bluejack Concrete Surfaces

Mr. and Mrs. Peter Brandow

Mr. and Mrs. Elder Brown, Jr.

Browne Family Wines—Mr. Michael Browne

Mr. and Mrs. Richard B. Bryan

Mr. David Bryant

Ms. Gayle Burnett

Mr. and Mrs. Christopher S. Cameron

Ms. Lisa Carroll

Mr. and Mrs. Tom Catani

Dr. and Mrs. Jefferson Chapman

Mr. and Mrs. H. Peter Claussen

Mr. Roy Cockrum

Coleman's Printing

Mr. F. Michael Combs

Mr. and Mrs. John Compton

Joseph and Norma Cook

Dr. and Mrs. David A. Cox

Drs. Monica Crane and Luke Madigan

Dr. and Mrs. Pete Crawford

Dr. and Mrs. Bryant Creel

Mr. and Mrs. Robert R. Croley

Chef Jeffery DeAlejandro

Mr. and Mrs. Blaine Enderson

Dr. and Mrs. Fred Ergen

Mr. and Mrs. Jerry Faerber

FASTFRAME

Ms. Mardel Fehrenbach

Annual Donors (cont.)

July 1, 2018-June 30, 2019

Mr. and Mrs. Joe Fielden, Jr.
Ms. Emily Fike
Mr. and Mrs. Thomas G. Ford
Mr. and Mrs. Malcolm Foster
Mr. and Mrs. Scott Fugate
Chef Matt Gallaher
Mr. and Mrs. Doug Griffey
Ms. Jenny Glover
Drs. Dorothy and John Habel
Chef Holly Hambright
Harper Auto Square
Mr. and Mrs. Robert E. Hawthorne
Mr. and Mrs. John Haynes
Mr. and Mrs. Steven Hess
Mr. and Mrs. Mark Hill
HomeChoice Windows & Doors, LLC
Mr. and Mrs. LeGrand P. Hyde III
Mr. and Mrs. David Jacobi
Jerry's Artarama
Mr. and Mrs. William Johnson
Mrs. Howard F. Johnston
Jonathan Miller Architecture & Design
Mr. and Mrs. Bob Joy
Knoxville Garden Club
Ms. Maribel W. Koella
Mr. and Mrs. Brian Krase
Dr. and Mrs. William Laing
Mr. and Mrs. Fred Langley
Law's Interiors
Lonesome Dove Knoxville
Ms. Sherri P. Lee
Mr. Beauvais Lyons and Ms. Diane Fox
Mr. and Mrs. David Martin
Dr. Angela Masini and Mr. Terry Grove
Mr. James D. Mason
Mr. and Mrs. Thomas N. McAdams
Mr. Daniel F. McGehee*
Mr. and Mrs. Mike Morton
Dr. and Mrs. Stephen E. Natelson
Dr. and Mrs. Gene Overholt
Ms. Allison Page and Mr. Connor Coffey
Mr. and Mrs. Ken Parent
Mr. and Mrs. Ray Pinkstaff
PostModern Spirits

Annual Donors (cont.)

July 1, 2018-June 30, 2019

Prism Pool & Backyard
Ms. Mary Rayson
Mr. James J. Reca
The Renteria Family
Mr. and Mrs. Geoff de Rohan
Rose Moss Designs—Anna Moss
Dr. and Mrs. Bernard S. Rosenblatt
Mr. and Mrs. William S. Rukeyser
Chef David Rule
Mr. and Mrs. Alan Rutenberg
Mrs. Susan Seymour
Mr. and Mrs. Thomas A. Siler, Sr.
Mr. and Mrs. Thomas A. Siler, Jr.
Mr. and Mrs. Keith Sinclair
Mr. James F. Smith, Jr.
Dr. Alan Solomon and Ms. Andrea Cartwright
Mr. and Mrs. Donald Spencer, Jr.
Mr. and Mrs. L. Caesar Stair IV
Mr. and Mrs. Frank Steer
Stephenson Realty and Auction
Mrs. Harry Stowers
Taylor & Huie Fine Interiors
Tennessee Art Educators Association
Todd Richesin Interiors
Triple C Distributing
Mr. and Mrs. Milton A. Turner
Visit Knoxville
Ms. Loida Velazquez
Drs. Dwight and Jan Wade
Mr. and Mrs. Derick Ward
William Andrews Architects
Ms. Jackie Wilson
Mr. Fred Wolfe and Dr. Donna Winn
Mr. Stuart Worden
Mrs. Brenda Wood
Ms. Melanie C. Wood
Mr. and Mrs. Todd Wright
Mr. and Mrs. Chad Youngblood

*deceased

Staff

July 1, 2018-June 30, 2019

Executive Office

David Butler, Executive Director
Denise DuBose, Director of Administration

Collections & Exhibitions

Stephen Wicks, Barbara W. and Bernard E. Bernstein Curator
Clark Gillespie, Assistant Curator
Robmat Butler, Preparator (through ? 2019)

Development

Margo Clark, Director of Membership and Grants
Maggie Myers, Manager of Administration for Development

Education

Rosalind Martin, Director of Education
DeLena Feliciano, Assistant Director of Education
Jonathan Hash, Visitor Services Manager
Chelsea Lloyd, Volunteer Coordinator

Fundraising

Carla May Paré, Director of Fundraising Events and Special Projects

Marketing

Angela Thomas, Director of Marketing

Operations

Joyce Jones, Director of Finance and Operations
Travis Solomon, Facility and Security Manager
Ron Martin, Facility Associate
Jeff Ledford, Facility Associate
Donald Fain, Maintenance Technician
Michael Gill, Alive After Five Coordinator
Susan Creswell, Shop Manager
Senea Worden, Assistant Gift Shop Manager
Diane Hamilton, Facility Sales Manager

Visitor Services Representatives

Madison Adlere
DeForest Barnet
Marilyn Bresnan
Mason Butler
Kathryn Copeland
Hope Hopson
Veronica Ludlow
Amanda Seale
Stevie Gayle Stevens
Marcus Taylor