

# CANVAS

knoxville museum of art  
Summer 2011 [www.knoxart.org](http://www.knoxart.org)

## Artists on Location

June 10 & 11, 2011

### FRIDAY June 10, 2011

7:30pm Painting demonstration by Nashville artist Dawn Whitelaw.  
Tickets \$10.00 at the door.

### SATURDAY June 11, 2011

Sunrise-3pm Artists paint at various locations around Knoxville. Public is invited to watch the artists paint.

7:30pm-10pm ARTISTS ON LOCATION Exhibition & Sale at the KMA.  
Free admission. Free food. Music until 9:30pm.

For more information or questions, email  
[artistsonlocation@gmail.com](mailto:artistsonlocation@gmail.com)

(left) Dawn Whitelaw, *Church & State*



**Ai Weiwei: Dropping the Urn**  
(Ceramic Works, 5000 BCE-2010 CE)  
May 13-August 7, 2011

Knoxville Museum of Art  
1050 World's Fair Park Drive  
Knoxville, TN 37916  
865.525.6101 • info@knoxart.org

**FREE Admission**

**Hours**

Tuesday - Saturday: 10am-5pm  
Sunday: 1-5pm

**Closed**

Mondays, New Year's Day, Independence Day, Thanksgiving, Christmas Eve, Christmas Day, and New Year's Eve

**STAFF**

**Executive Office**

David L. Butler, Executive Director  
Shirley Brown, Director of Administration  
Denise DuBose-Lloyd, Fundraising Events Manager

**Collections & Exhibitions**

Stephen Wicks, Barbara W. and Bernard E. Bernstein Curator  
Clark Gillespie, Assistant Curator  
Robmat Butler, Curatorial Assistant

**Development**

Donna Dempster, Director of Development  
Margo Clark, Associate Director of Development, Membership & Grants  
Krishna Adams, Assistant Director of Development & Visitor Services

**Education**

Rosalind Martin, Associate Curator of Education, K-12 Programs  
Chris Molinski, Associate Curator of Education, Adult Programs

**Marketing**

Angela Thomas, Director of Marketing

**Operations**

Joyce Jones, Director of Finance  
Frank Vallone, Chief of Security  
Jim Mullins, Assistant Chief of Security  
Travis Solomon, Security Associate  
Donald Fain, Maintenance Technician  
Michael Gill, Alive After Five Coordinator  
Susan Creswell, Museum Shop Manager / Buyer  
Mary Hess, Assistant Museum Shop Manager  
Diane Hamilton, Facility Sales Manager

**Canvas Newsletter**

Published three times a year by the Knoxville Museum of Art © 2011

**Free for KMA members**

Subscription price is \$15 per year.

**Questions?**

Contact Angela Thomas, Director of Marketing,  
865.934.2034, athomas@knoxart.org

Visit the museum online...  
www.knoxart.org

Follow the museum on...  
http://twitter.com/knoxart

Become a fan of the  
museum on Facebook

Watch KMA videos online...  
http://knoxart.blip.tv

knoxville  
museum  
of @art

Open your eyes.  
Open your mind.



**WELCOME FROM THE EXECUTIVE DIRECTOR**

As a place that simultaneously “celebrates the art and artists of East Tennessee” and “presents new art and new ideas,” the Knoxville Museum of Art invites you to explore how artists in our region engage with and contribute to the wider national and international art scene. This summer that relationship is particularly interesting.

The KMA has been honored this year to present an extraordinary series of significant shows by important Asian artists. We began this spring with Xioze Xie, whose paintings and mixed-media works, informed by the artist's experiences in China and the United States, address how we receive and process information and turn it into history. In May we host a traveling exhibition of ceramic works by Ai Weiwei, arguably China's most important contemporary artist. Ai Weiwei has been the focus of intense worldwide interest and speculation over the past few months as his increasingly contentious relationship with the Chinese authorities has reached a crisis point. In early April, when this was being written, the artist was being held incommunicado, and governments and art organizations around the globe were agitating for his release. You can be sure that the Knoxville showing of *Ai Weiwei: Dropping the Urn* will be avidly watched from far beyond our region. We are also pleased to introduce in June the distinguished Korean artist Kwang-Young Chun, whose wall reliefs and monumental freestanding sculptures relate equally to traditional Korean culture and international contemporary art.

Closer to home, we are proud to mount the first public display of the *Local Industry Cloth*, the bolt of fabric produced by Anne Wilson in collaboration with area weavers and museum visitors during the course of her 2010 KMA exhibition *Wind/Rewind/Weave*. This groundbreaking exhibition seamlessly connected contemporary global issues of production to our region's heritage of industrial textile production and home-based weaving. You can also experience the interaction of local artists with national and international currents in *Contemporary Focus*, now in its third year of spotlighting interesting and ambitious emerging artists from East Tennessee.

All the above unfolds against the backdrop of *Higher Ground: A Century of the Visual Arts in East Tennessee*, the permanent installation celebrating the rich history of the visual arts in our region. New material is being added all the time to this flagship exhibition, which merits repeated visits and leisurely contemplation.

Thank you for your generous membership support, which makes it possible for us to bring you such an exciting, high-quality exhibition program. Your membership also helps keep the museum accessible to everyone by keeping admission free. This edition of *Canvas* is filled with all kinds of opportunities for you and your family. Be sure to visit this summer, when the museum vibrates with the joyful noises of Summer Art Academy. I look forward to seeing you here often.

The Knoxville Museum of Art celebrates the art and artists of East Tennessee, presents new art and new ideas, serves and educates diverse audiences, enhances Knoxville's quality of life and economic development, and operates ethically, responsibly, and transparently as a public trust.

# Anne Wilson: Local Industry

MAY 13 – AUGUST 7, 2011



*Anne Wilson: Local Industry* is the first public exhibition of the *Local Industry Cloth*, produced in 2010 by 2,100 volunteers alongside 79 experienced weavers at the Knoxville Museum of Art. The cloth, 75' 9" long, was created over the course of three months during the artist's project *Local Industry*, part of the exhibition *Anne Wilson: Wind/Rewind/Weave*.

The *Local Industry Cloth* was formed entirely from donated fibers, often from mills facing closure throughout the southeastern United States. The thread was prepared on hand-crank bobbin winders by visitors to the KMA. Wound bobbins were then used by experienced weavers to compose this single bolt of cloth, made up of only stripes, on one loom inside the gallery space. Once made, the cloth was donated to the Knoxville Museum of Art by the artist alongside an "Archive of Production" identifying all contributors to *Local Industry*. The "Archive of Production" is on view beside the cloth during this exhibition.

*Anne Wilson: Wind/Rewind/Weave* was a project organized by the Knoxville Museum of Art and visual artist Anne Wilson to investigate the global crisis of production and skill based textile labor. The catalog *Anne Wilson: Wind/Rewind/Weave* with essays by Glenn Adamson, Jenni Sorkin, Julia Bryan-Wilson, Laura Y. Liu, and Philis Alvic is available for purchase in the museum giftshop, and will be available through distribution by WhiteWalls and the University of Chicago Press later this year.

**Exhibition opening reception**  
Thursday May 12, 5:30 - 7:30pm

KMA sponsors include City of Knoxville and the Tennessee Arts Commission. Media sponsors include AT&T Real Yellow Pages, Digital Media Graphix, Kurt Zinser Design, and WBIR.



Anne Wilson Wind/Rewind/Weave

# Ai Weiwei: Dropping the Urn

(Ceramic Works, 5000 BCE – 2010 CE)

MAY 13 – AUGUST 7, 2011

*Ai Weiwei: Dropping the Urn (Ceramic Works, 5000 BCE – 2010 CE)* is the first solo exhibition of works by Chinese artist Ai Weiwei to be presented in the United States outside of New York.

Organized by Arcadia University Art Gallery, *Ai Weiwei: Dropping the Urn* features a selection of ceramic works and photographs ranging from 1993 to the present. In these works, Ai Weiwei transforms ancient ceramic objects, including 7000-year old Neolithic urns and Han dynasty vessels, by painting them with a “Coca-Cola” logo, dipping them into vats of industrial paint, smashing them on the ground, or grinding them into powder.

The largest piece in the exhibition appears to be a large pile of tiny sunflower seeds. Each seed, produced to scale, is actually painstakingly hand-crafted from porcelain. Weighing precisely one ton, the porcelain seeds were created by a team of workers in the town of Jingdezhen, China where porcelain has been produced for the past 1700 years.

An exhibition catalog is available, produced by Arcadia University in collaboration with the Office for Discourse Engineering, distributed in the United States by RAM Publications.

*Ai Weiwei: Dropping the Urn* has been organized by Arcadia University Art Gallery and supported by the Pew Center for Arts & Heritage through the Philadelphia Exhibitions Initiative. Curated by Richard Torchia & Gregg Moore.

Presenting sponsors include Nancy and Stephen Land. Additional sponsors include City of Knoxville, and the Tennessee Arts Commission. Ad sponsors include June and Rob Heller. Media sponsors include AT&T Real Yellow Pages, Digital Media Graphix, Kurt Zinser Design, and WBIR.



(Image on cover)  
*Dropping a Han-Dynasty Urn*, 1995, triptych of gelatin silver prints, each print 49 5/8” x 39 1/4”  
Courtesy private collection, USA  
(second of three photographs that comprise the work)



*Colored Vases*, 2006/2008, vases from the Neolithic age (5000–3000 BCE) and industrial paint. 9 pieces, dimensions variable (smallest piece: height 10” x diameter 9”; largest piece: height 14 1/2” x diameter 9”) Courtesy private collection, USA



(left)  
*Blue-and-White Moonflask*, 1996, replica in style of Qing dynasty, Qianlong reign era (1736-95), porcelain, glaze and cobalt brushwork, 20 7/8” x 14 1/2” x 6” Courtesy private collection, USA



*Watermelons*, 2006, porcelain and glaze, height 17 1/2” x diameter 15” Courtesy Ai Weiwei, Beijing



*Kui Hua Zi*, 2006, porcelain and paint, 1 ton, diameter approximately 80”  
Courtesy Ai Weiwei, Beijing



ARCADIA  
UNIVERSITY

# at the KMA

Summer 2011

For details visit [www.knoxart.org](http://www.knoxart.org)

## MAY

## JUNE

## JULY

## AUGUST

1	Elementary Art Exhibition Rechenbach Collection
4	Dine & Discover: Chris Molinski on <i>Anne Wilson: Local Industry</i> 12-1pm
12	<i>Anne Wilson: Local Industry</i> Exhibition opening reception 5:30-7:30pm
12	<i>Ai Weiwei: Dropping the Urn</i> Exhibition opening reception 5:30-7:30pm
13	Alive After Five Slow Blind Hill 6-8:30pm
19-20	"Splashing Color Outside The Box" with Charles "Chico" Osten Thursday, May 19 10am-4pm Friday May 20 10am-2pm
20	Discussing Ai Weiwei With University of Tennessee scholars Suzanne Wright and Mark Pitner KMA Auditorium 6:30-7:30pm

1	Education Gallery Rechenbach Collection
6-10	Summer Art Academy
8	Dine & Discover: <i>Kwang-Young Chun</i> 12-1pm
9	<i>Kwang-Young Chun: Aggregations, new work</i> Exhibition opening reception 5:30pm
13-17	Summer Art Academy
17	Alive After Five Christabel & the Jons 6-8:30pm
20-24	Summer Art Academy
24	Alive After Five Kirk Fleta Band 6-8:30pm
27-July 1	Summer Art Academy

1	Education Gallery Dance Marathon Patient Art East Tennessee Children's Hospital
4	Festival on The Fourth World's Fair Park 2-8pm
6	Dine & Discover Jack Neely on <i>Higher Ground</i> 12-1pm
8	Alive After Five Soulfinger 6-8:30pm
11-15	Summer Art Academy
15	Alive After Five John Myers Band 6-8:30pm
18-22	Summer Art Academy
22	Alive After Five Sharon Mosby & the Wendel Werner Quintet 6-8:30pm
25-29	Summer Art Academy
29	Alive After Five Crawdaddy 6-8:30pm

1	Education Gallery Dance Marathon Patient Art East Tennessee Children's Hospital
3	Dine & Discover Lindsay Mican Morgan, curator at the Art Institute of Chicago, on the Thorne Rooms 12-1pm
5	Alive After Five The King Bees 6-8:30pm
1-5	Summer Art Academy
12	Alive After Five Blue Mother Tupelo 6-8:30pm
25	Contemporary Focus 2011 Exhibition opening reception 7-9pm
25	FAX Exhibition opening reception 7-9pm

May sponsored admission:  
Texas Instruments

June sponsored admission:  
The Trust Company

July sponsored admission:  
AT&T Real Yellow Pages



# Kwang-Young Chun: Aggregations, new work

June 10-September 4, 2011

Korean artist Kwang-Young Chun (b. 1944) began work on his series of *Aggregations* in the 1990s. Today, he is recognized internationally for these sculptural forms. The basis of his work is individual, triangular, Styrofoam shapes. Individually, these shapes are minuscule. Taken together, however, their visual impact is immense. This concept of the aggregate is what informs Chun's work.

The Styrofoam shapes are covered in Korean mulberry paper. In Korea, the paper is a mainstay and has many utilitarian uses from floor and window coverings to candy and medicinal wrappers. It also resonates with personal meaning for the artist, who recalls trips to an herbalist as a small child. Medicines wrapped in mulberry paper hung from the ceiling of the shop, the paper protecting the contents from dampness and insects.

Chun uses pages recycled from old books to cover the geometric forms. These pages are covered in Korean and Chinese characters, adding another layer of cultural and personal meaning. He hand ties the paper over each shape, twisting pages into string to complete the wrapping. In this way Chun is able to integrate traditional materials into a contemporary context.

After starting his artistic career studying western painting, in particular Abstract Expressionism, Chun turned to the mulberry paper as a way to express his unique, Korean artistic voice. The papers, taken from books that are often as old as one hundred years, have been touched by people from all walks of life. Over the years, these people – men and women, young and old – have left indelible fingerprints. Chun captures the spirit of these people and their varied voices in his series of *Aggregations*.

Curated by Susan Moldenhauer. Funded in part by the National Advisory Board of the UW Art Museum and the Wyoming Arts Council through the National Endowment for the Arts and the Wyoming State Legislature.

KMA sponsors include City of Knoxville, and the Tennessee Arts Commission. Media sponsors include AT&T Real Yellow Pages, Digital Media Graphix, Kurt Zinser Design, and WBIR.



(top)  
*Aggregation 07-D111A*,  
2007, mixed media, Korean  
mulberry paper, 78-3/4" x  
78-3/4", photo courtesy of  
the artist

(middle)  
*Aggregation 08-N040*  
(detail), 2008, mixed media,  
Korean mulberry paper,  
63-3/4" x 103-1/2", photo  
courtesy of the artist

(bottom)  
*Aggregation 002-MA101A*,  
2002, mixed media, Korean  
mulberry paper, 91" x 80"  
inches, photo courtesy of  
the artist



## Higher Ground: New Works, New Stories

In its three-year history, *Higher Ground* has championed the accomplishments of key East Tennessee artists and generated a new level of appreciation for the history of art in the region. This ongoing display remains dynamic and ever-changing thanks to new acquisitions, loans, and interpretive content.

Among recently acquired works are two watercolors (upper left) by legendary Knoxville landscape painter Charles Krutch (1849-1934) that attest to the artist's abilities to capture the spirit of his beloved Smoky Mountains. Late in his career, Krutch was tagged the "Corot of the Smokies" for his ability to transform views of the mountains into celebrations of light, color, and atmosphere. The watercolors were donated to the museum as a bequest of Dr. Frank Galyon of Knoxville.

Notable among new works on loan is *The Heron* (right), a painting by magic realist Charles Rain (1911-1985), a cryptic scene that was likely inspired by one of the Knoxville-born artist's many visits to the Mediterranean coast. He painted it using tiny brushes to achieve near-microscopic detail. Because of Rain's exacting technique, he produced very few works and his paintings are highly sought after.

One of the featured works in *Higher Ground* is Ansel Adams' *Dawn, Autumn Forest, Great Smoky Mountains National Park, Tennessee*. Adams took the image during his little-known 1948 visit to the Smokies as part of his Guggenheim-funded photographic survey of national parks. The KMA acquired the print in 2009, and subsequent museum research uncovered the fact that Adams took 47 photographs during his visit to the Smokies, but only published four. After extensive negotiations with the Ansel Adams Trust, the KMA has purchased limited use rights to access the entire set of the artist's Smoky Mountain images. Thanks to an award by the Federal Institute of Museum of Library Services, the museum is conducting research that will result in expanded interpretive content for *Higher Ground*, including a new website that will feature all 47 of Adams' Smoky Mountain images. When completed, this website represents the first time the entire group of images have been made available for public viewing. They shed light on Adams' search for particular vantage points, and at least two contain landscape features that suggest they were taken moments before or after KMA's print *Dawn, Autumn Forest*. The KMA hopes to acquire the other three published prints from this series for the collection.

Work continues on enhancing and upgrading other interpretive components for *Higher Ground*. Video interviews, school curriculum units, an educational DVD, gallery activity sheets, and a gallery brochure are but a few examples of new content that will ensure the stories represented in *Higher Ground* will be documented, preserved, and made available for future audiences.

(above)  
Ansel Adams (1902-1984)  
*Dawn, Autumn Forest, Great Smoky Mountains National Park, Tennessee*. 1948  
Silver gelatin print; printed c. 1970-76  
19 1/4 x 14 1/4 inches  
©2009 The Ansel Adams Publishing Rights Trust. Gift of Patricia and Alan Rutenburg, and Mary Ellen and Steve Brewington.

(top)  
Charles Krutch (1849-1934) *Untitled*, circa 1920  
Watercolor on paper  
4 3/4 x 7 7/16 inches  
Bequest of Dr. Frank Galyon

(top right)  
Charles Rain (1911-1985) *The Heron*, 1959  
Oil on board 32 x 38 inches  
Sheldon Museum of Art,  
University of Nebraska-Lincoln

(right)  
Charles Krutch (1849-1934) *Sunset*, circa 1920  
Oil on board 19 x 15 inches  
Gift of Dr. and Mrs. William J. McCoy III



*Higher Ground: A Century of the Visual Arts in East Tennessee* is made possible by the generous support of:

The City of Knoxville  
Knox County  
Tennessee Arts Commission  
IMLS Institute of Museum and Library Services  
The Guild of the Knoxville Museum of Art  
Asian Foundation  
Cornerstone Foundation of Knoxville  
The Rogers Foundation  
Scripps Howard Foundation

Friends of Higher Ground:

Ann and Steve Bailey  
Marty and Jim Begalla  
Mary Ellen and Steve Brewington  
Sandi Burdick and Tom Boyd  
Mary Helen Byers  
Case Antiques, Inc. Auctions and Appraisals  
Linda and Pete Claussen  
Kay and Jim Clayton  
Cathy and Mark Hill  
Whitney and James Johnson  
Melinda Meador  
Townes Lavidge Osborn  
Sylvia and Jan Peters  
Alexandra Rosen and Donald Cooney  
Patricia and Alan Rutenberg  
Alan Solomon and Andrea Cartwright

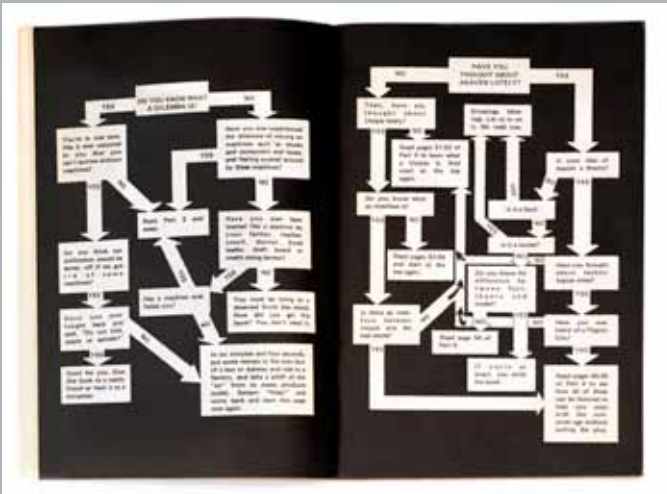


# UPCOMING EXHIBITIONS

## FAX

August 26 – November 6, 2011

The exhibition will include faxes by nearly 100 artists sent to the initial showing of *FAX* at the Drawing Center, New York, along with seminal examples of early telecommunications art.



(above) Peter Coffin, *Untitled*, 2009. Courtesy of the artist.

(far left) Matt Sheridan Smith, *Untitled (contrast test)*, 2008. Courtesy of the artist and Lisa Cooley Fine Art.

(left) Edward Tufte, *Untitled*, 2009. Courtesy of the artist.

## CONTEMPORARY FOCUS 2011

AUGUST 26 - NOVEMBER 6, 2011

This is the third installment of an annual group show that serves as a vital means of recognizing, supporting and documenting the development of contemporary art in East Tennessee.

Contemporary Focus 2011 artists are John Bissonette, Brian Jobe, and Greg Pond

Opening reception for both exhibitions is Thursday, August 25.

KMA Members from 6-7pm. Open to the public 7pm.

### Sponsor Spotlight

The Knoxville Museum of Art thanks Randy Burlison and Bistro By The Tracks for their continued generous support of the L'Amour du Vin wine auction and dinner.

#### Bistro By the Tracks

You don't have to go far for an exceptional culinary experience.

Executive Chef Chester Miller masterfully blends culinary traditions from across the globe with the familiar tastes of East Tennessee. Reviewers say "consistently spectacular" with friendly "non-stuffy" service. Bistro by the Tracks simply is Knoxville's answer to great metropolitan dining.

We proudly offer an extensive and diverse wine list featuring carefully selected whites and reds from the finest wineries around the world. Bistro by the Tracks is a recipient of Wine Spectator's Award of Excellence, 2010.

Join us for an evening of dining that is at once casual and elegant.

Reservations most appreciated.

## Knoxville Museum of Art 2011 Summer Art Academy

KMA's Summer Art Academy classes will expand your child's creativity and his or her knowledge of art. The KMA offers classes that ignite your child's imagination through painting, sculpture, drawing, and more. These classes will not only increase your child's knowledge of art, but will help in the development of his or her artistic techniques, fine motor skills, critical thinking skills, and confidence. Each week offers a new and exciting age-appropriate art class that will nourish and challenge your child.

Classes are held at the Knoxville Museum of Art. Morning classes are offered each week for children ages 3-12 years old. Afternoon classes are offered for ages 13 and up. Classes start Monday, June 6, and continue each week through August 5. Full class descriptions can be found at [www.knoxart.org](http://www.knoxart.org).

Tuition for the half-day class is \$85.00 for members and \$100.00 for nonmembers (unless specified otherwise), and includes workshop supplies, instruction, and guided tours.

Workshops and scholarships are filled on a first-come, first-served basis.

For more information call  
865.525.6101 ext. 246 or  
e-mail [education@knoxart.org](mailto:education@knoxart.org).

#### June 6-10

Introduction to Art, Ages 3-4 • 9-12noon

Funny Faces, Ages 5-6 • 9-12noon

Collage-Painting without Paint, Ages 7-9 • 9-12noon

Pastel Drawing, Ages 10-12 • 9-12noon

Color Theory, Ages 13-15 • 1-4pm

#### June 6-17 (Two weeks)

Acrylic Mixed-Media Painting, Ages 13 and 15 • 1-4pm, \$170 Members/\$200 Nonmembers

#### June 13-17

Shapes and Animals, Ages 3-4 • 9-12noon

Pop Art, Ages 5-6 • 9-12 noon

Colors and Animals of the Rainforest, Ages 7-9 • 9-12noon

Learn To Knit, Ages 10-12 • 9-12noon

Genre Painting, Ages 15 and up • 1-4pm

#### June 6-17 (Two weeks)

Acrylic Mixed-Media Painting, Ages 13 and 15 • 1-4pm, \$170 Members/\$200 Nonmembers

#### June 20-24

Nature Hike, Ages 3-4 • 9-12noon

Looking at Art in Nature, Ages 5-6 • 9-12 noon

Art Down Under, Ages 7-9 • 9-12noon

Scrap booking, Ages 10-12 • 9-12noon

#### June 20-July 1 (Two weeks)

Modeling the Head in Clay, Ages 13 & up • 1-4pm, \$170 Members/\$200 Non-members

Watercolor Painting, Ages 15 & up • 1-4pm, \$170 Members/\$200 Non-members

#### June 27 - July 1

A Week at the Beach, Ages 3-4 • 9-12noon

Creative Printmaking, Ages 5-6 • 9-12 noon

Math and Art!, Ages 7-9 • 9-12noon

Weaving, Ages 10-12 • 9-12noon

#### June 20-July 1 (Two weeks)

Modeling the Head in Clay, Ages 13 & up • 1-4pm, \$170 Members/\$200 Non-members

Watercolor Painting (Two weeks), Ages 15 & up • 1-4pm, \$170 Members/\$200 Non-members

#### July 11-15

Colors, Ages 3-4 • 9-12noon

Let's Collage, Ages 5-6 • 9-12 noon

Drawing Basics, Ages 7-9 • 9-12noon

In the Style of...., Ages 10-12 • 9-12noon

Oil Painting 101 (Two weeks), Ages 13-15 • 9-12noon, \$170 Members/\$200 Non-members

Artist's Studio Workshop (Two weeks), Ages 14 & up • 1-4pm, \$170 Members/\$200 Non-members

#### July 18-22

Finger Painting, Ages 5-6 • 9-12 noon

Junky, Funky Funny Assemblage, Ages 7-9 • 9-12noon

Cartooning With Mr. Ollie (Two weeks) Ages 10-12 • 9-12noon, \$170 Members/\$200 Non-members

Oil Painting 101 (Two weeks), Ages 13-15 • 9-12noon, \$170 Members/\$200 Non-members

Artist's Studio Workshop (Two weeks) Ages 14 & up • 1-4pm, \$170 Members/\$200 Non-members

Caricatures with Mr. Ollie (Two weeks), Ages 15 & up • 1-4pm, \$170 Members/\$200 Non-members

#### July 25-29

Things That Go!, Ages 5-6 • 9-12 noon

Art of Native North America, Ages 7-9 • 9-12noon

Cartooning With Mr. Ollie (Two weeks), Ages 10-12 • 9-12noon, \$170 Members/\$200 Non-members

Caricatures with Mr. Ollie (Two weeks), Ages 15 & up • 1-4pm, \$170 Members/\$200 Non-members

#### August 1-5

Stories in Art, Ages 3-4 • 9-12noon

See it in 3D!, Ages 5-6 • 9-12 noon

Color Magic, Ages 7-9 • 9-12noon

Watercolor, Ages 10-12 • 9-12noon

Color Theory, Ages 13-15 • 1-4pm